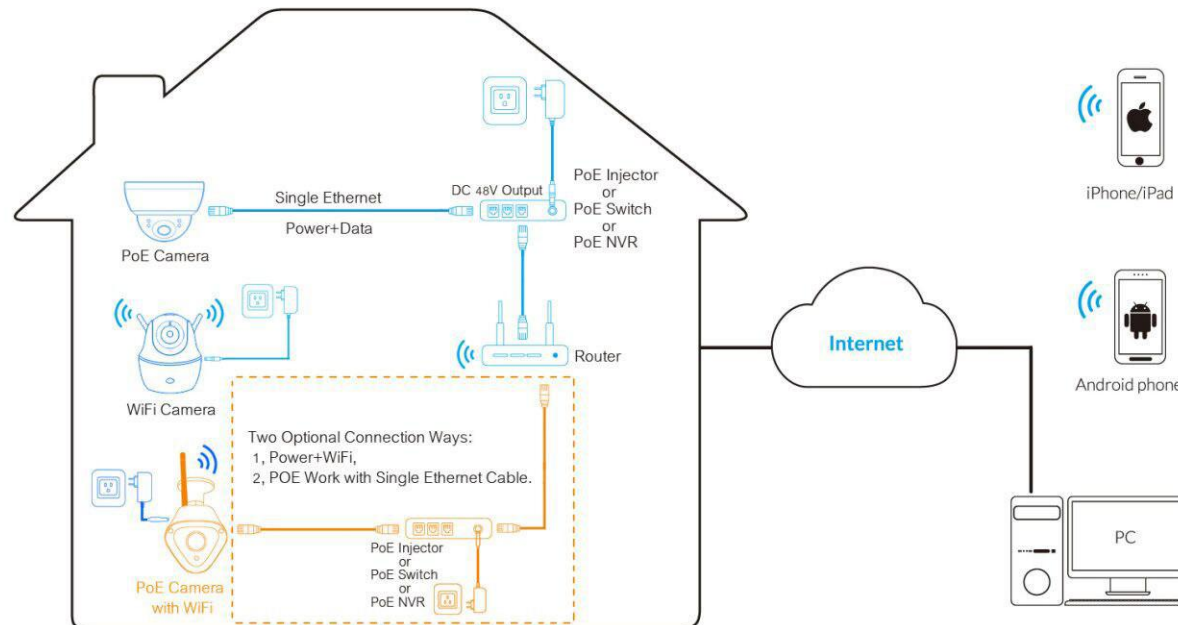


Welcome to choose our product!

QUICK START GUIDE

Please read the user manual completely

Camera Connection Diagram



Attention:

- 1, For POE camera, we advise to connect POE switch, POE injector or POE NVR, but if you do not have these devices, it also works with Power Adaptor + Ethernet Cable
- 2, For Wireless Camera, we advise to connect to Power Adaptor + Ethernet cable first, after setup WiFi, unplug the Ethernet cable, it will connect router via WiFi in 30s.
- 3, For POE Camera with WiFi, there are two options for you depends on your installation environment. If WiFi signal is strong and stable, we advise to use it as WiFi Camera, just need connect power adaptor; if WiFi signal is not good, we advise to use it as POE camera

Please follow the instruction on this Quick Start Guide in order to get your camera set up.

I, Setting Up Your Camera

1, Ethernet Setup for WiFi Camera

2.1 on phone/ipad

2.2 on Windows PC

2.3 on MAC

2, Wireless Installation for WiFi Camera

3, Ethernet Setup for POE Camera

4, Ethernet Setup for POE Camera with WiFi

5, P2P Setup (Add additional camera once it's been setup)

II, Additional Access Methods

1, Local Desktop Access Setup

2, Remote Desktop Access Setup

3, Remote Web Access Setup

III, FAQ

I , Setting Up Your Cameras

1, Ethernet Setup for Camera

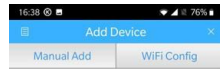
1.1 ,Ethernet Setup for Camera on Smart phone /ipad (You can access camera via phone app locally and remotely once it's been setup)

- Connect camera to power adaptor and Ethernet cable, download and open App "UPTEC View" from App Store or Google Play Store. Or Scan QR code below to download APP.



Click "+" to add device
watch the world together

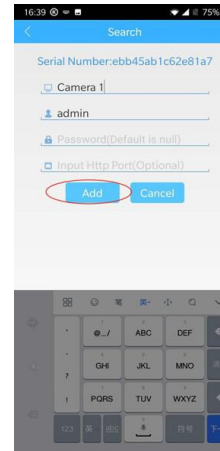
1.1.2



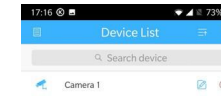
1.1.3



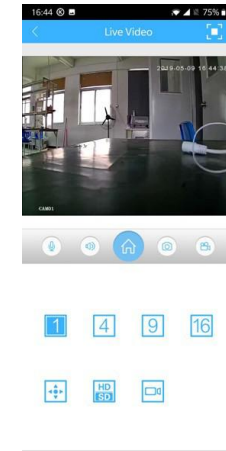
1.1.4



1.1.5



1.1.6



1.1.7

- Tap the “Add Camera” icon on the top
- Tap the “Search ”will search device from LAN
- Tap the Camera in the Camera list
- Tap “add” button on the top (You can change camera name first before Tap add)
- add success show on the device list
- Tap device to live the camera



Click "+" to add device
watch the world together

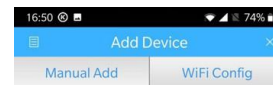
1.1.8



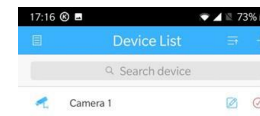
1.1.9



1.1.10



1.1.11

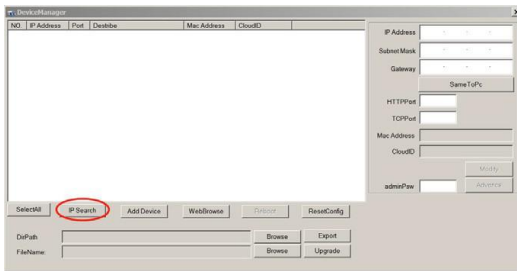


1.1.12

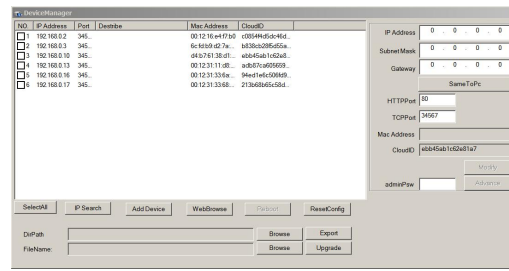
- Tap “+”to add device
- Enable the advance item
- Enter the device name and cloud ID,enter the username and password(default username is admin password null)
- Tap “ok”to finished add
- Add device success show on list

2.1 Ethernet Setup for WiFi Camera on Windows PC

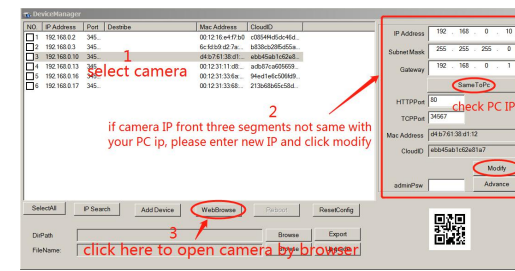
- Connect camera to power adaptor and Ethernet cable, find and install “DeviceManage” from accessory CD\Device search tool\



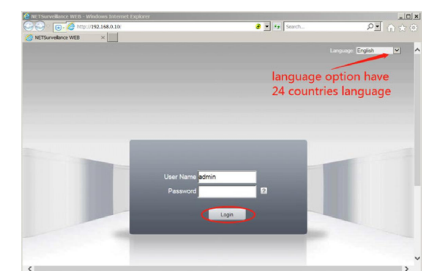
122



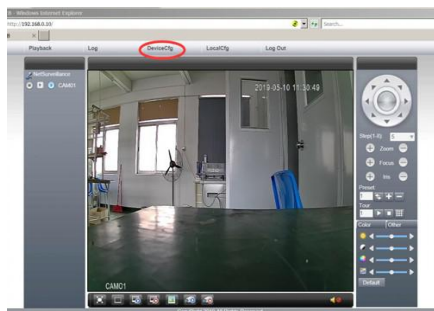
123



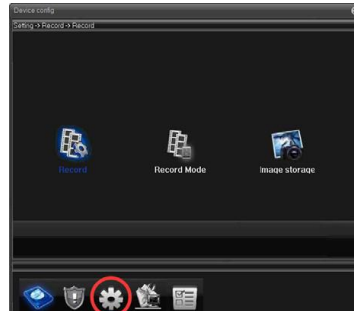
124



125



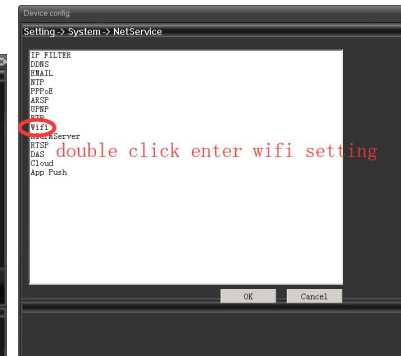
126



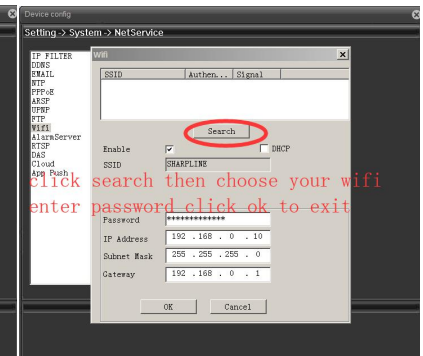
127



128



129



12.10

- Run ‘Device manage’ tool, click ‘IP search’ to search out all cameras or recorder in LAN
- All device show on list in LAN
- Select camera in list check the network segment if in your computer network, if not please modify to your network segment then click the ‘WebBrowser’ to open camera by browser

- Jump to browser from tools automatically, or Just input ip address in IE/ Edge/ Chrome/ Firefox, top right corner have language for choose, enter the user name and password(default username is admin password null) then click login. First time open need install Plugin to view in IE, if install failure please change IE setting allow ActiveX .
- Logged in you can see picture from camera click top side 'DeviceCfg' enter camera settings
- Select 'System Settings' icon see picture
- Select 'NetService' icon see picture
- Double click "Wifi" item in the list see picture
- Click Enable option and DHCP option---->Search---->Choose Wifi---->Input WiFi Password----->OK
- Unplug Ethernet Cable, wait for 15s, it will be online again via WiFi, the IP address maybe change when change to WiFi, so we can search out camera with"DeviceManage", then double click the ip address to open in IE or Just input ip address in IE/ Edge/ Chrome/ Firefox to view.

1.3 Ethernet manage device on MAC

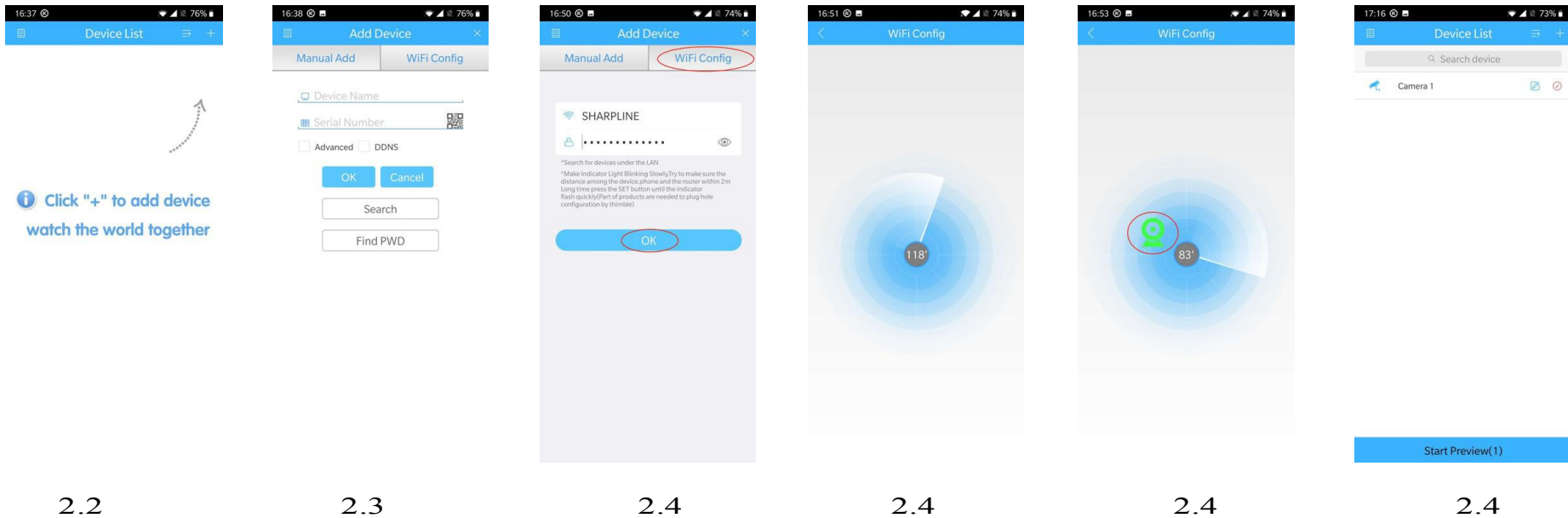
1.3.1 Connect camera to power adaptor and Ethernet cable,

1.3.2 Install the access management software 'VMS for marc'

1.3.3 Open the VMS you can manage the and setup device locally

2, Wireless Installation for WiFi Camera

1.2 Download and open App "UPTEC View" from App Store or Google Play Store. Connect camera to power adaptor (Do NOT connect Ethernet Cable), put it near WiFi router.



- 1.3 Please confirm your phone connected to WIFI, Tap the “+” icon on the top right corner
 - 1.4 Enter add device page tap the ‘WiFi Config’
 - 1.5 Pressing camera reset key 5s then heard sound if camera is talk version, the camera will restart about 1 minute later when heard sound ‘wait reconnect security’ from camera input WiFi Password, then Tap OK, APP enter setup camera WiFi in 120s, tap icon enter the camera name set password for finish setup when you found camera icon show near the radar, select the new camera in Camera List, now tap the camera to live view.
- 3, Ethernet Setup for POE Camera , connect camera to 48V output POE injector or POE Switch or POE NVR, or power adaptor and Ethernet cable, download UPTEC View app from App Store or Google Play Store, then please reference steps of Ethernet Setup for WiFi Camera (1.1.2-1.1.12).
 - 4, Ethernet Setup for POE Camera with WiFi , If you want to use it as a WiFi Camera, please reference the Ethernet Setup for WiFi Camera (2.2-2.4), if you want to use it as a POE camera, please reference the Ethernet Setup for WiFi Camera (1.1.2-1.1.12).
- 5, P2P Setup (Add additional Camera once it’s been setup)
 - 5.1 Download and open App “UPTEC View” from App Store or Google Play Store.
 - 5.2 Tap the “+” icon on the top right corner

5.3 Tap “QR code” open camera for scan QR code on the camera, or just input ID manually, and input right username and password, Tap ‘OK’, now tap camera name in device list for live view.(1.1.8--1.1.12)

II , Additional Access Methods

1, Local Desktop Access Setup



1.1 Install 'VMS' from accessory CD\Access management software for windows\

1.2 Run 'VMS' and login, Default username: admin, password already enter, just click 'signing' to open

1.3 Click 'DeviceManage' > search device choose the camera > Click 'Add' > choose the group click 'save'

1.4 Can see added camera show in the list of bottom, click 'Home' icon back to the main page, click 'liveView' into live page

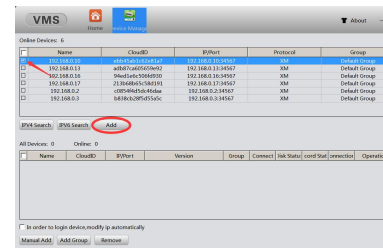
1.5 Double click camera ip on the right side, you can see the live from camera on the window



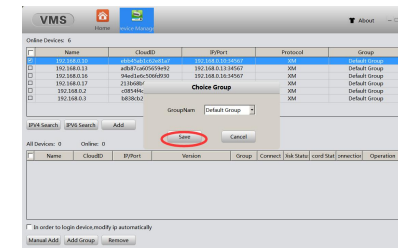
12



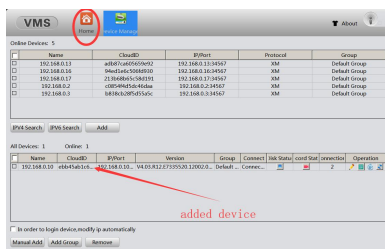
13



13



13



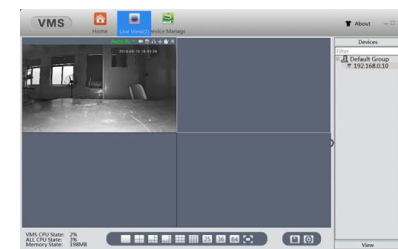
14



14



15



15

2, Remote Desktop Access Setup



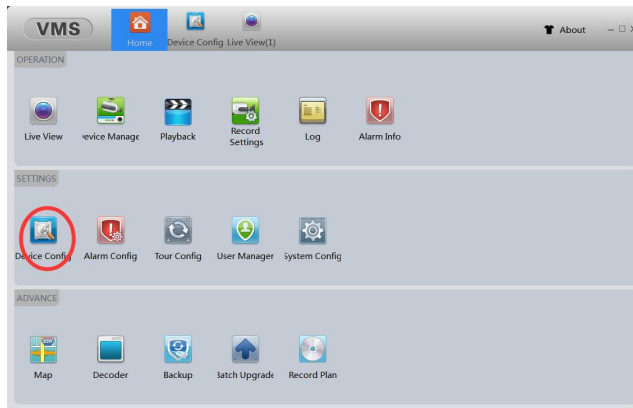
1.1 Open 'VMS' again and login enter main page

1.2 Click 'Device Manage' go to device manage page click 'Manual Add' enter device name login Type choose Cloud ID enter User Name and Password (default user: admin password null) then click 'OK' button, the camera show in list of bottom side, click 'Home' icon on top go back main page click 'Live View' go to live page double click right side camera will living from camera by remotely

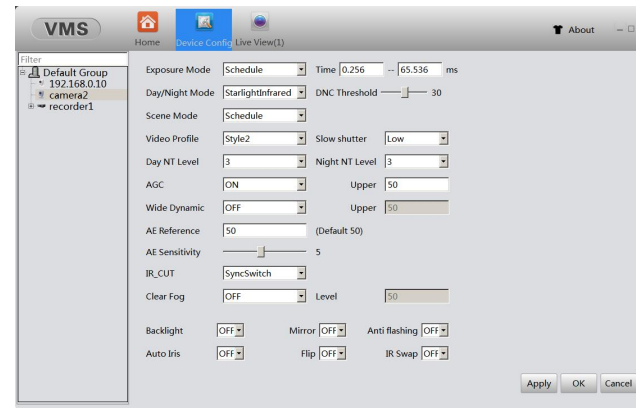
The screenshots illustrate the following steps:

- Dashboard:** The 'Device Manage' icon is highlighted with a red circle.
- Add Device Dialog:** The 'Add Device' window is shown with fields for Device Name, IP, Port, Username, Password, and Protocol. The 'Login Type' is set to 'CloudID'. A red arrow points to the 'CloudID' field with the text 'choose cloudID'.
- Device Manager Table:** A table listing online devices. The 'Manual Add' button is highlighted with a red circle.
- Device Manager Table:** The table is updated with a new device entry: 'camera2' with CloudID 'd4861a058a270a17'.
- Live View Page:** The 'Live View' icon is highlighted with a red circle. A red arrow points to the camera feed area with the text 'double click to live'.
- Live View Page:** The camera feed is displayed, and the 'camera2' device is selected in the 'Devices' list on the right.

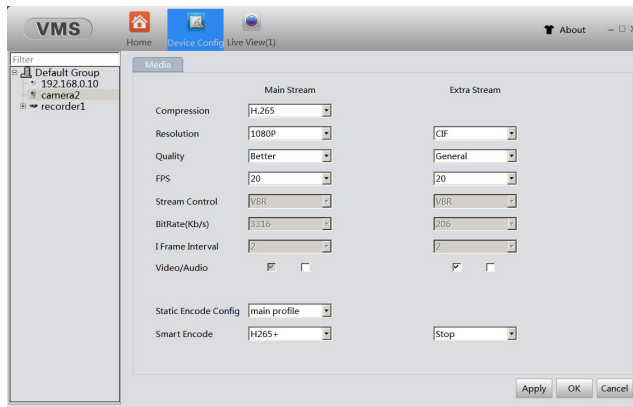
2.3 If want to setup the camera or recorder by remotely or local, click 'Device Config' icon go to setup page, can setup the device parameter network motion detect region alarm and set as default.



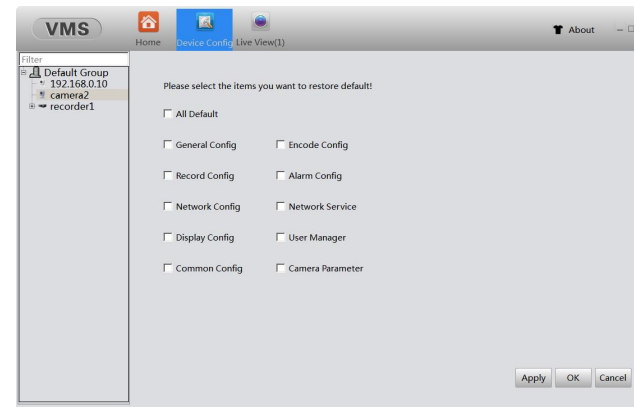
23



23



23



23

III, FAQ

1, Q: IP Camera default ports?

A: HTTP Port: 80; RTSP Port: 554; ONVIF Port: 8899; All ports could be edited in web browser>DeviceCfg>System>Network and DeviceCfg>System>NetService page

2, Q: How to setup device obtain IP address automatically?

A: Open the device setup page in web browser>DeviceCfg>System>Network click 'DHCP Enable'

3, Q: How to setup Email Alert?

A: Open the device setup page in web browser>DeviceCfg>System>NetService double click enter 'EMAIL' settings click enable enter the mail service address and account name passwords click OK.

4, Q: How to Reset Device?

There is a Reset Button at the bottom of camera or at the end of cable, please keep camera is power on, then press and keep pressing the Reset button for 5s, camera will be reset and restart. If there is not reset button you can use Search Tool 'DeviceManage' to find device in LAN then choose the device click 'ResetConfig' button or click 'WebBrowser' open device setup page in web browser>DeviceCfg>Advance>Default