

WIFI kit how to pair with camera introduce

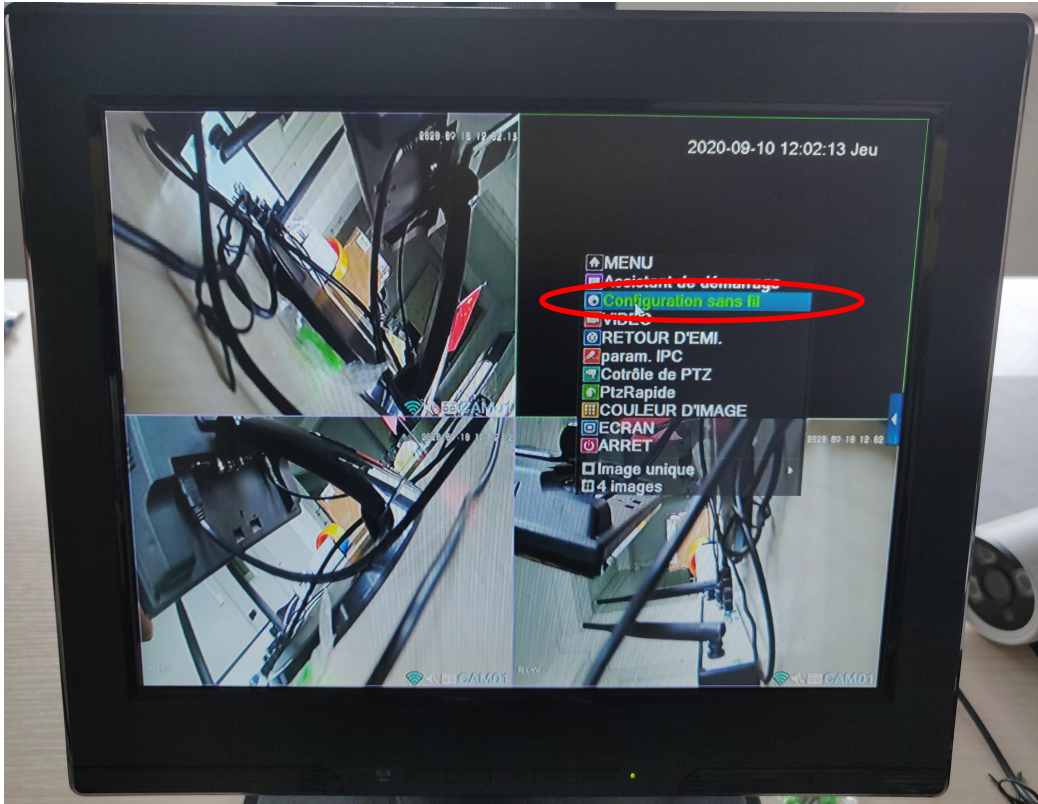
See below picture there are four cameras lost one camera in monitor . next step we can pair with camera to recorder for solve this problem (same can use for add pair new camera).



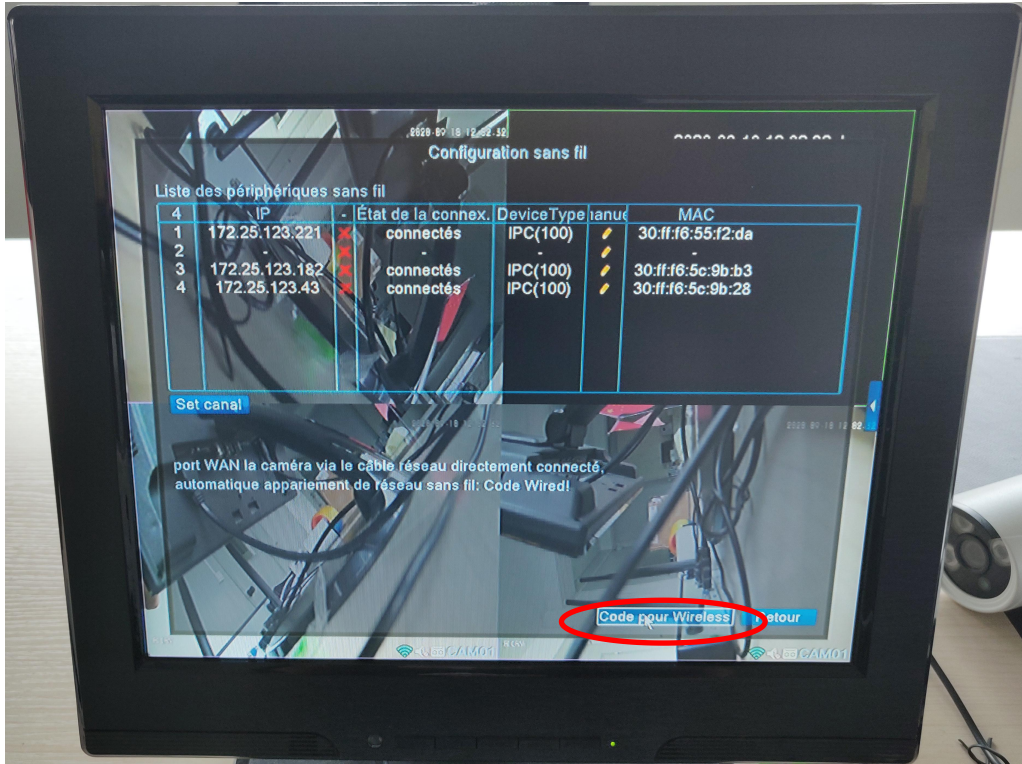
1. First need confirm the camera lost picture or new add camera can working normally, masking optical resistor can see IR led lighting,



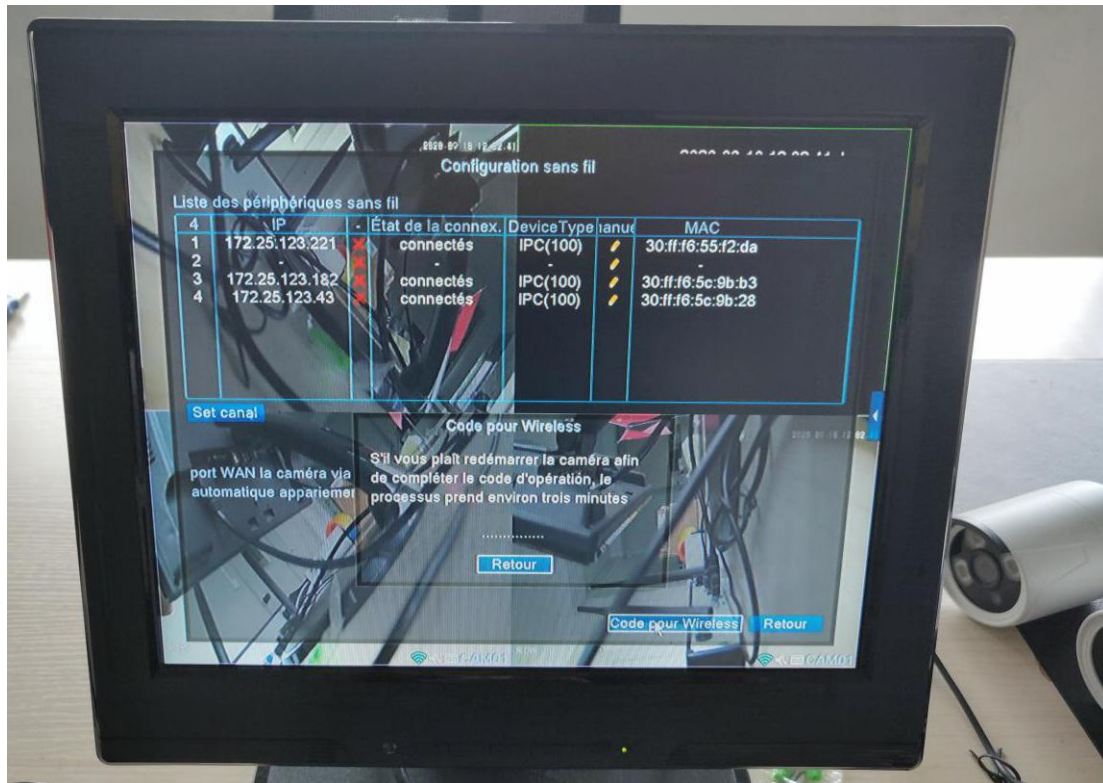
2. Operate mouse click right key show menu list then choose "channel set" click mouse left key (first login will prompt login page and login) enter channel set page.



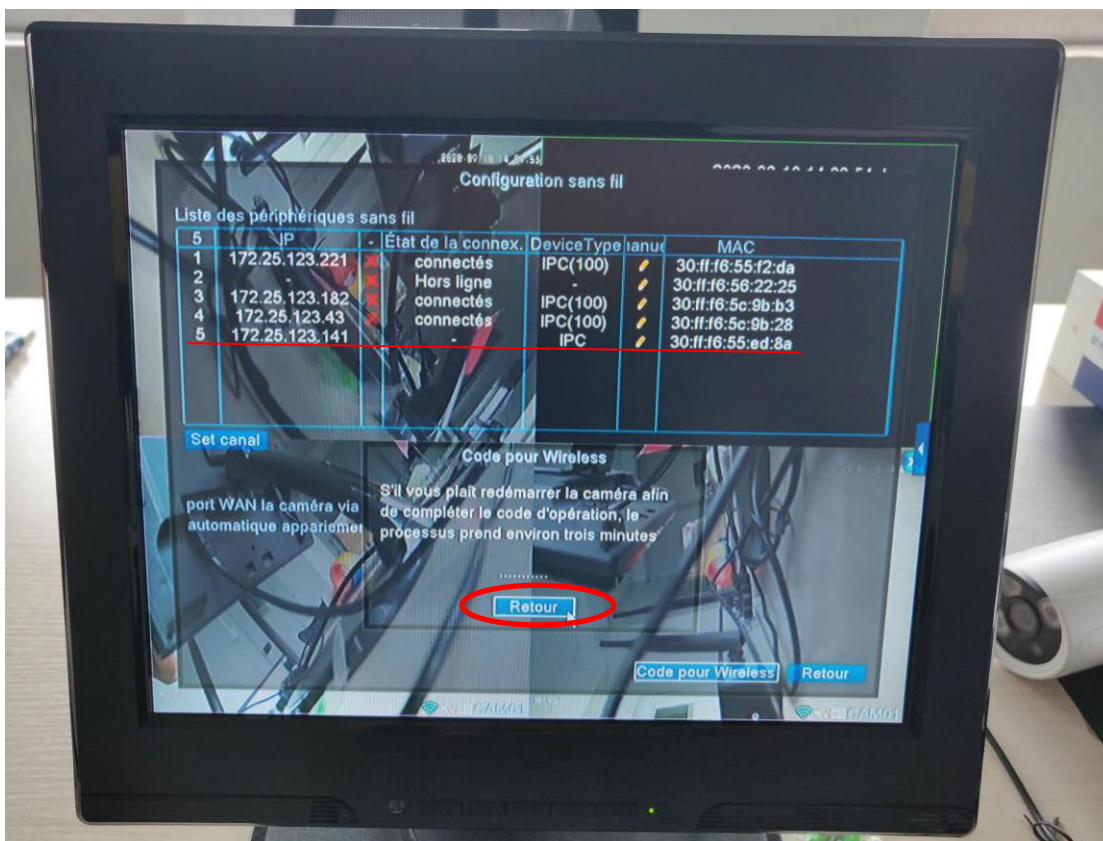
3. Choose "code for wireless" button click left key recorder will enter pairing mode.



4. Now unplug the camera power you need pair and plug again let camera enter pairing mode too.



5. Wait moment still the channel set page show new camera IP show on list, Then mouse left key click "exit" for exit pairing mode.



6. Mouse left key click pencil icon of new camera on list. Then pair finished can see four pictures on screen.



7. Mouse left key click "Exit" for exit setup page.

