

Setup Email Alarm Guide

Installation preparations

1. Connect the camera with Local network, power the camera (DC12V power supply or Power over Ethernet if support). Use default IP address 192.168.1.10 to access the camera, or get IP address through upgrade tool "DeviceManage.exe" software.

Mark: Please contact supplier to get DeviceManage software. Or download from

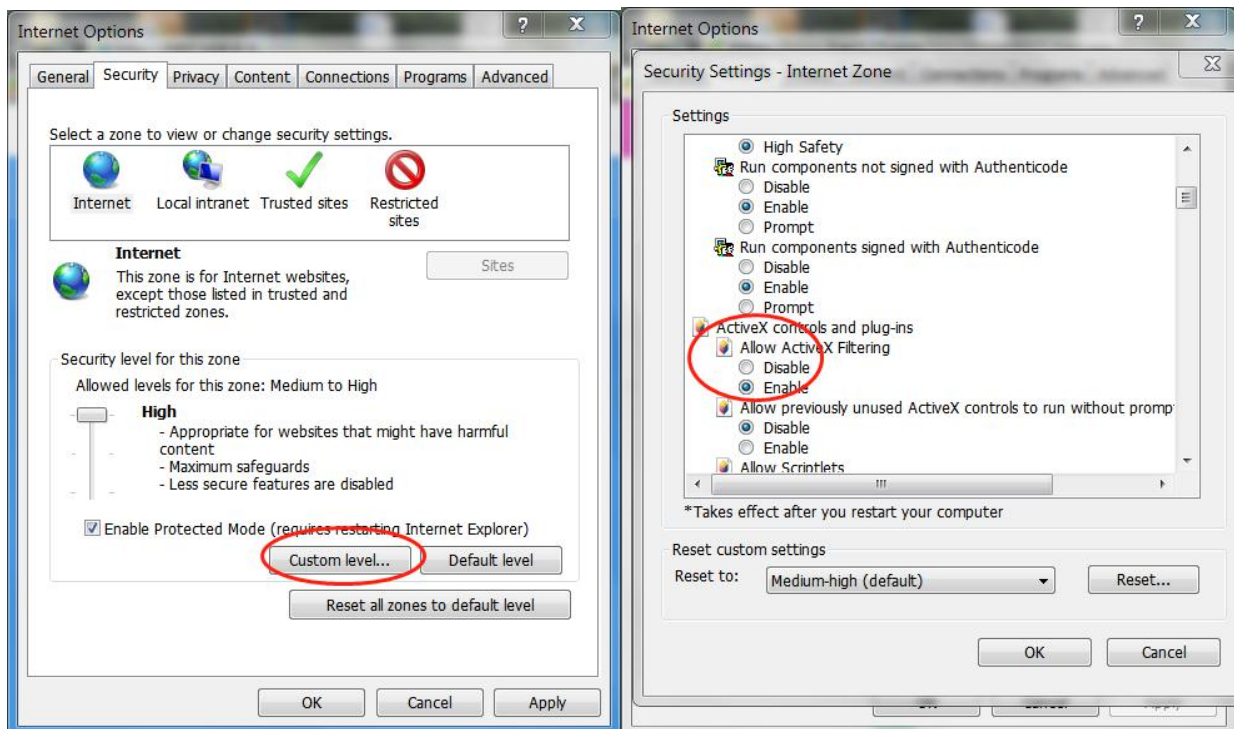
<https://www.e-cylinderiot.com/download/>

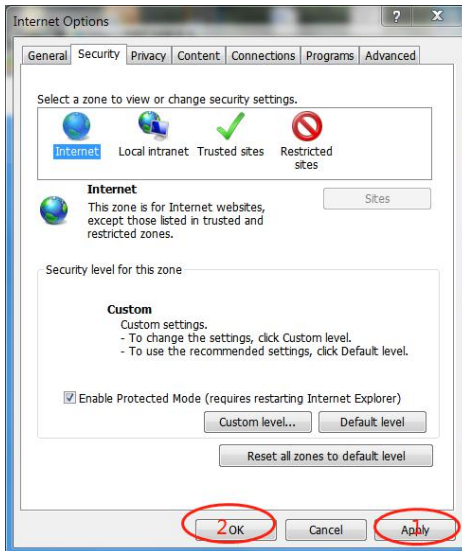
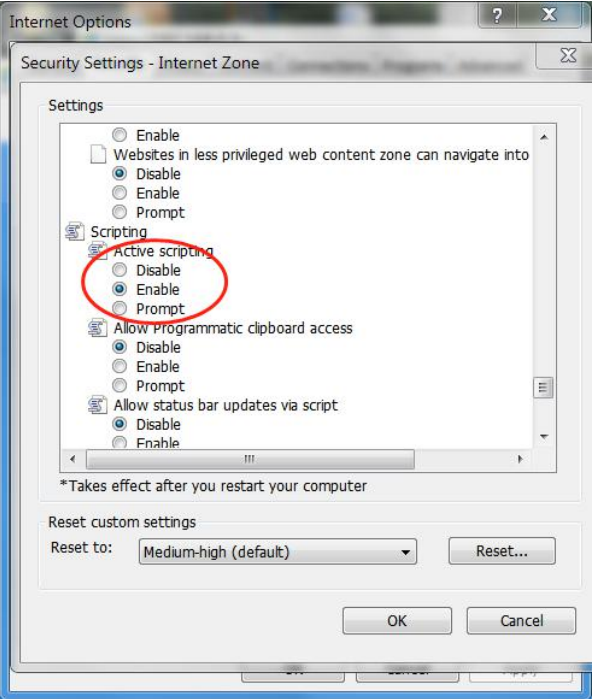
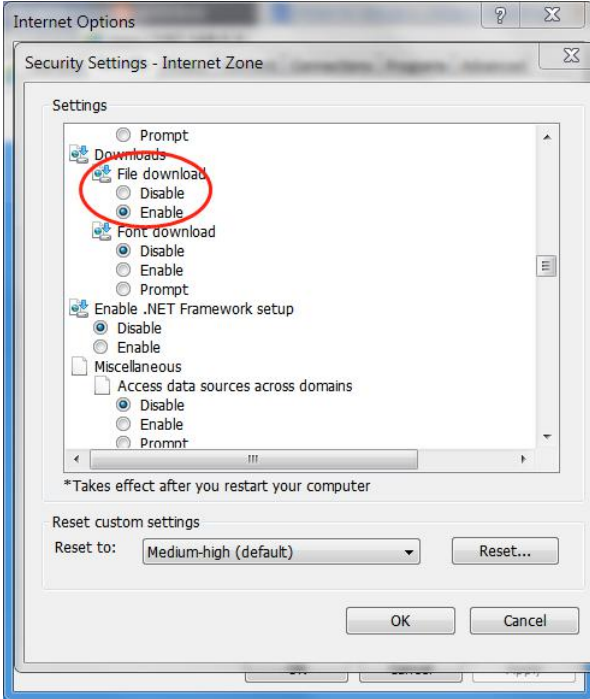
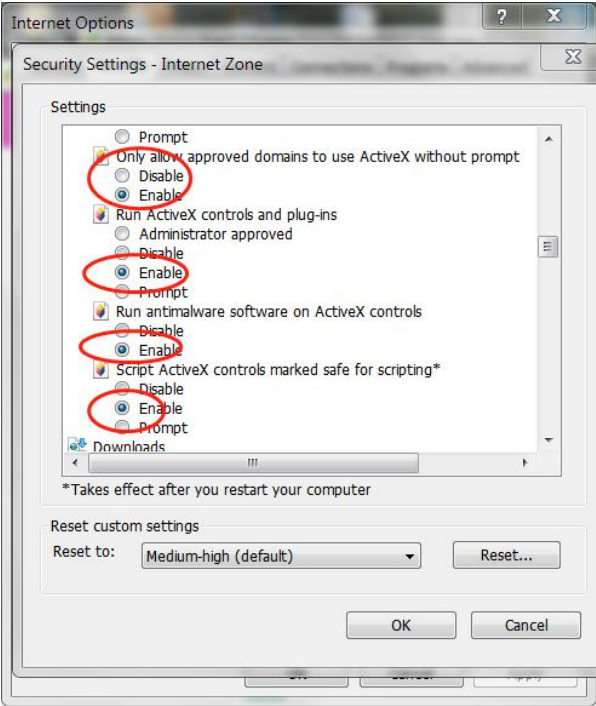
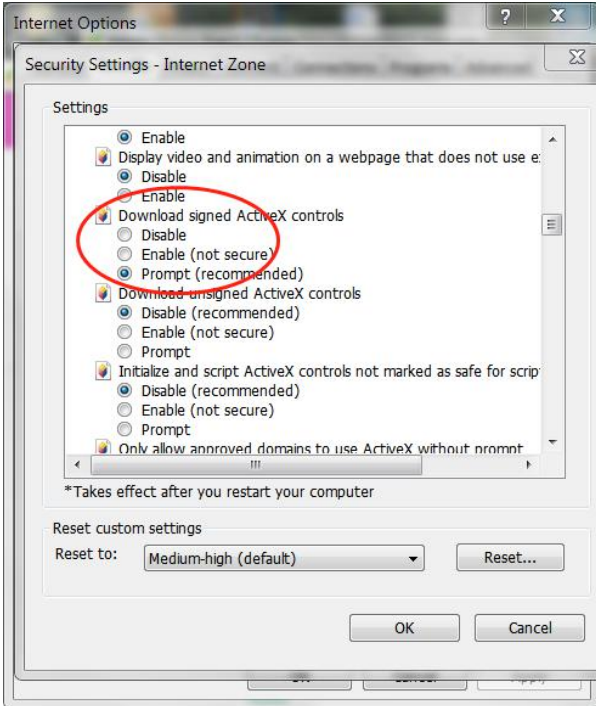
First time login the web need install ActiveX plug, if your computer have not link to internet , you can download and install activeX plug "New active.exe" from

<https://www.e-cylinderiot.com/download/>.

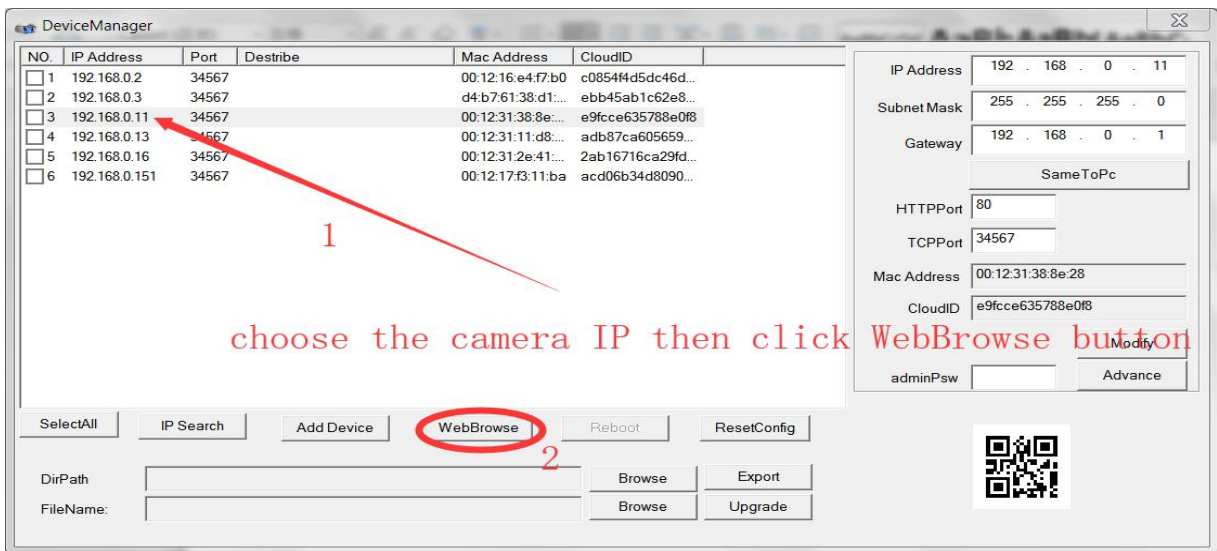
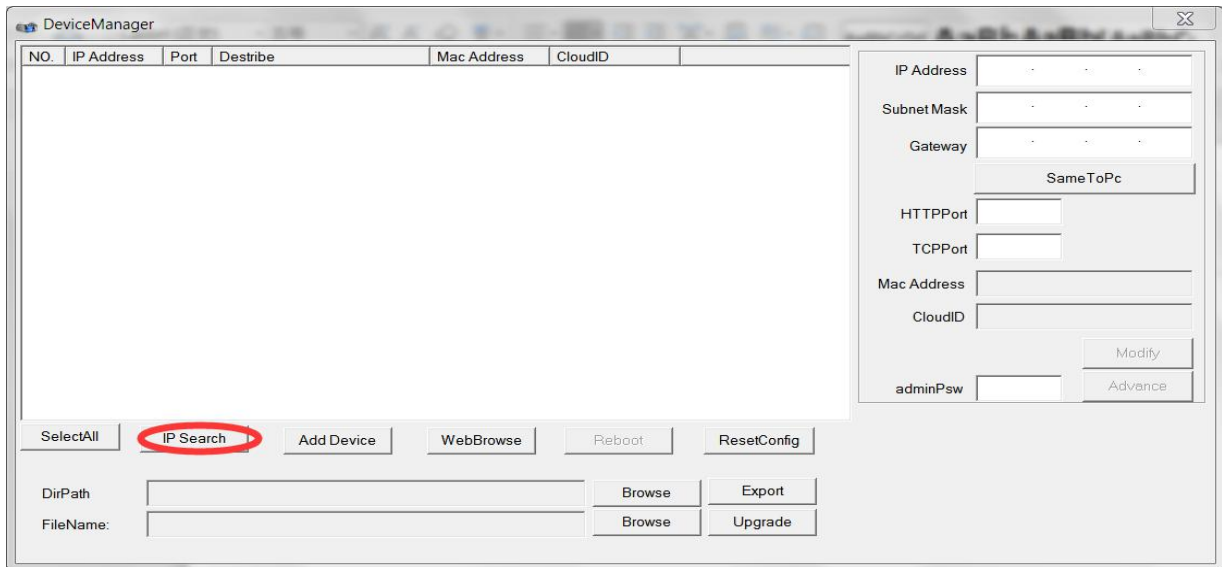
2. Login camera web by IE enter user name: admin and default password is null (if you modify the password please enter correct password), click login enter camera preview page . select "Device cfg>Setting>System>NetService", double click "EMAIL" enter Email settings page, enable the function enter 'SMTP Server' 'Port' 'SSL' 'User Name' 'Password' 'Sender' 'Receiver' 'Title' then click "Mail Testing" button test the parameter if ok after test success click "ok" to save and exit. Then you can enable alarm function you want send Email. Such as "Video motion" "Video blind" "Video lost" "Intelligent" "Abnormal", If trigger will send email automatically..

2.1 If you already install ActiveX plug and enter camera IP address by IE can not see login page or have not see ActiveX plug install prompt, you need enable the run ActiveX and run script option on Internet Explorer, see below operate pictures. Open IE browser find "tools>Internet options>Security" item select "Custom level" button enter new item setting, slide down find "ActiveX controls and plug-ins" item enable the 1'Allow ActiveX filtering' 2'Download signed ActiveX controls' 3'Run ActiveX controls and plug-ins' 4'Run antimalware software on ActiveX controls' 5'Script ActiveX controls marked safe for scripting' continue slide down find "Downloads" enable the 'File download' and slide down find "Scripting" item and enable 'Active scripting'. click "ok" to save and exit.

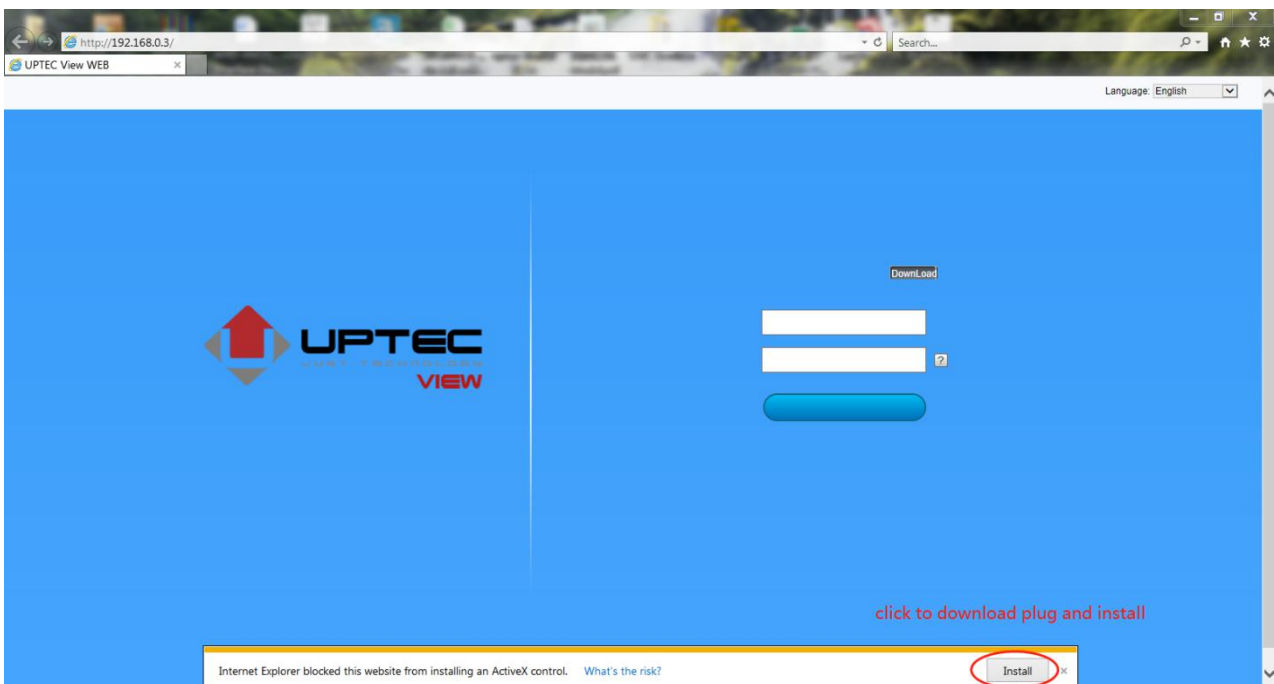


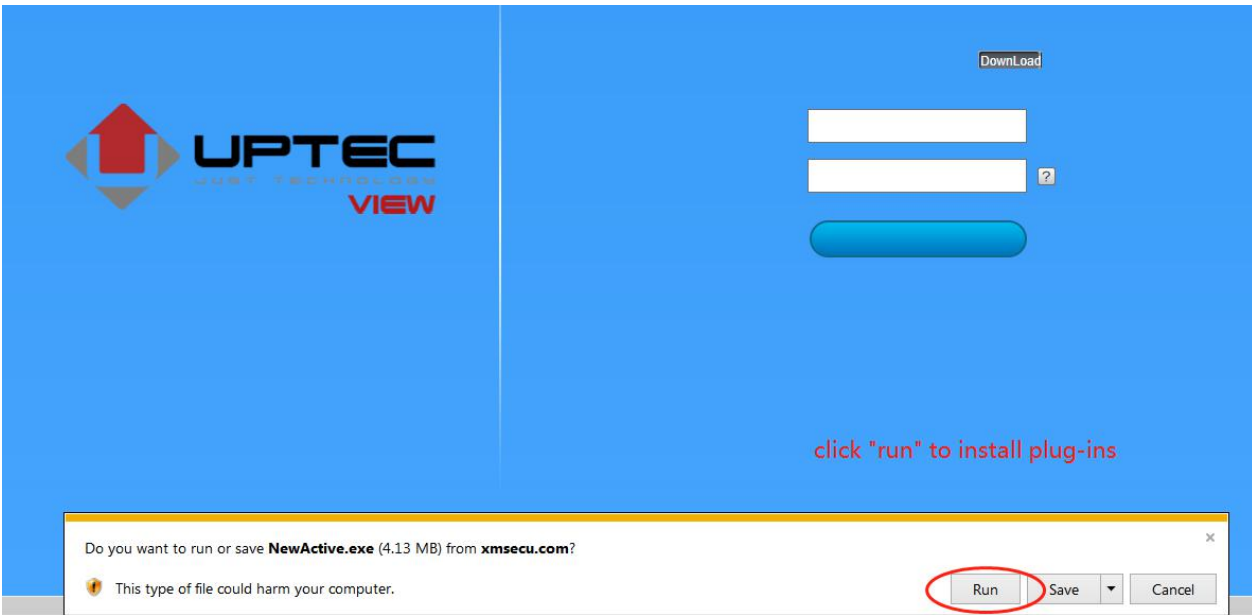
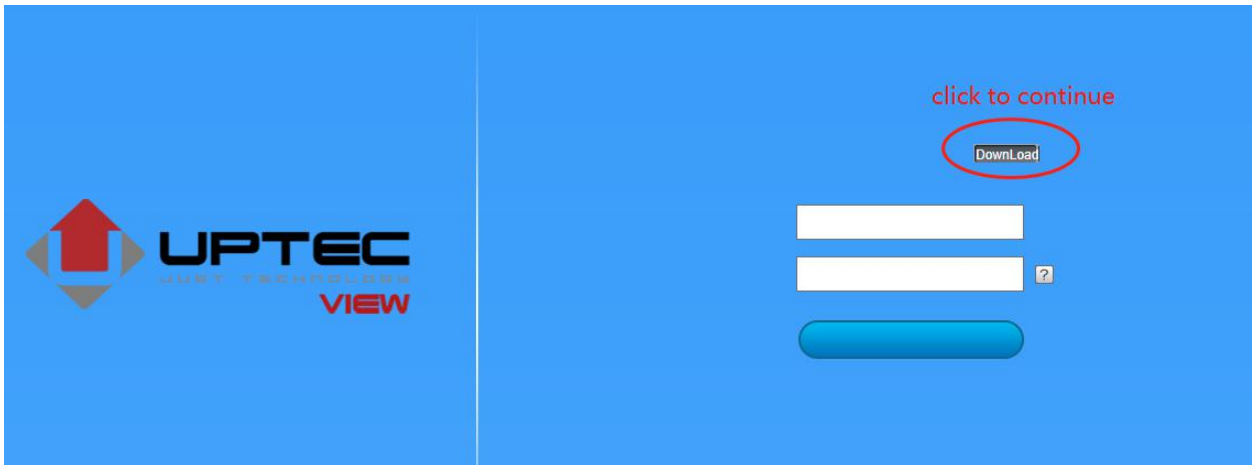
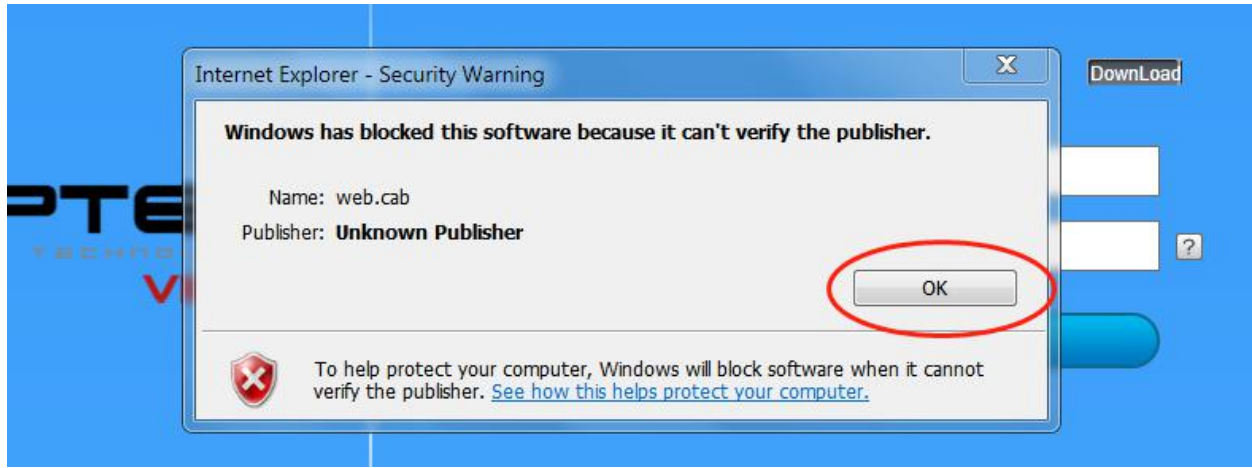


1. Search the camera IP address by tool



2. Login camera web by IE and install plug. (go step 3 if not first time login device)

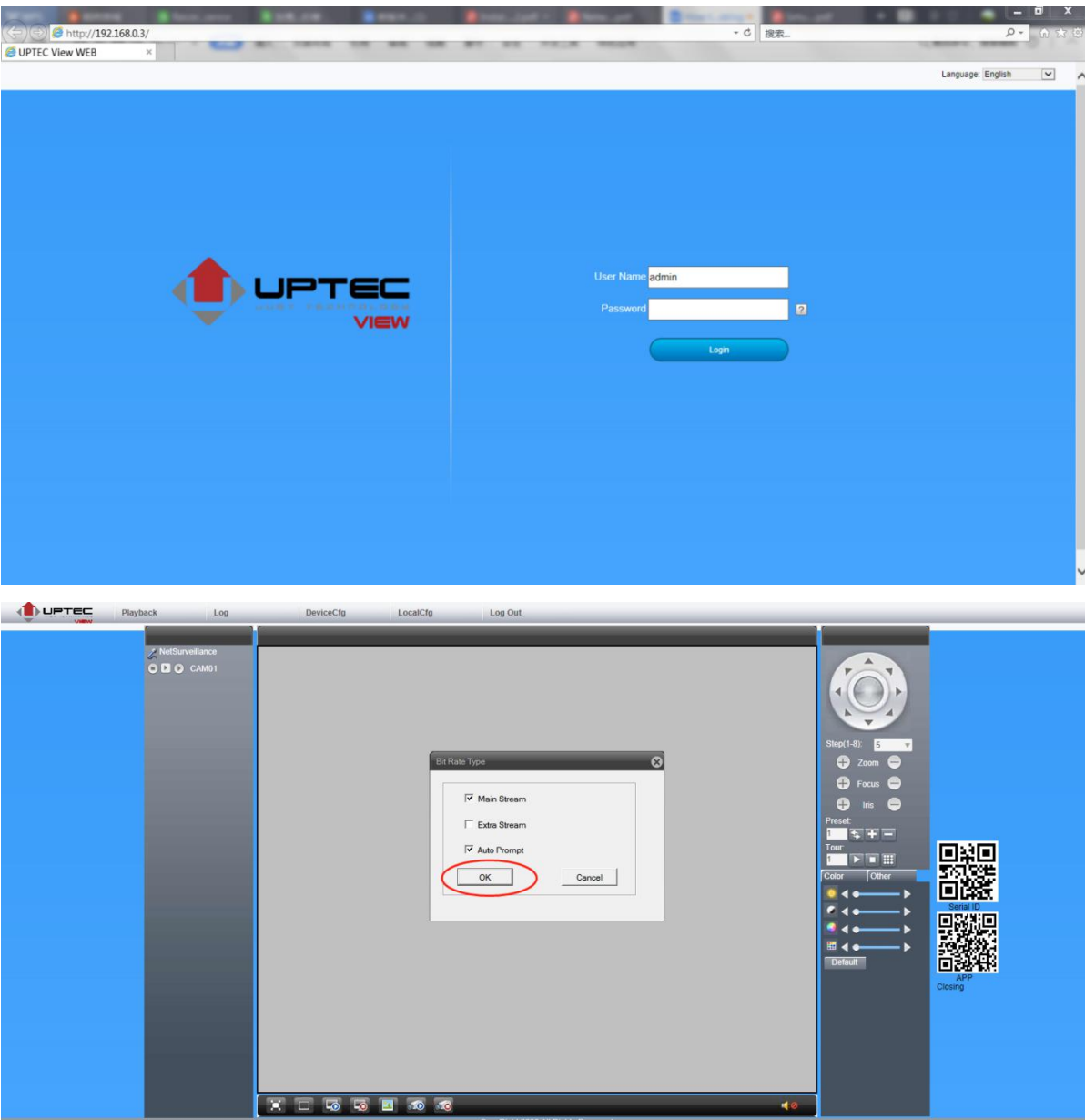


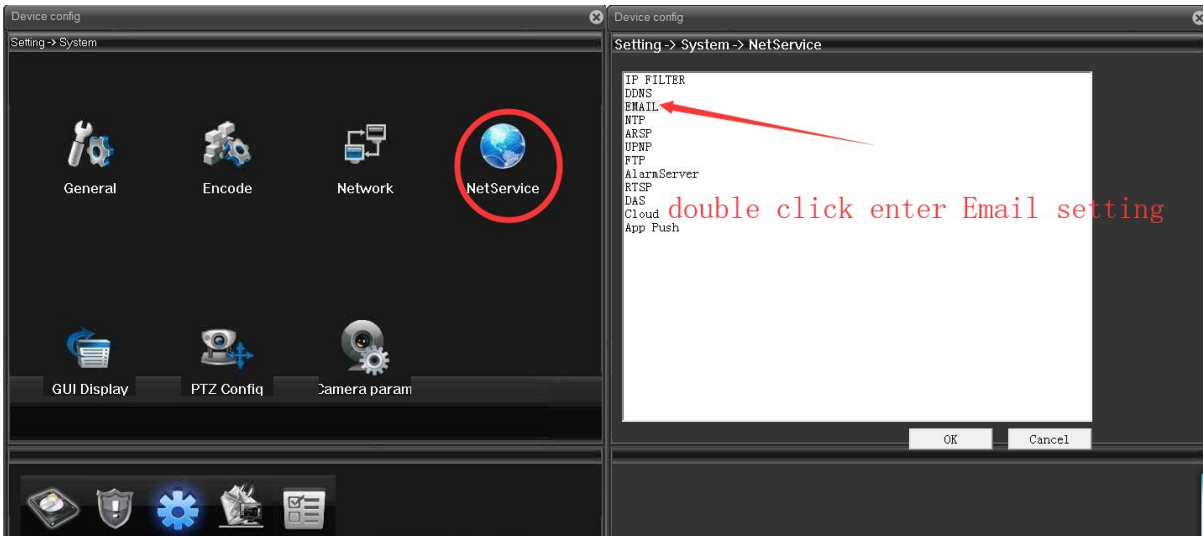
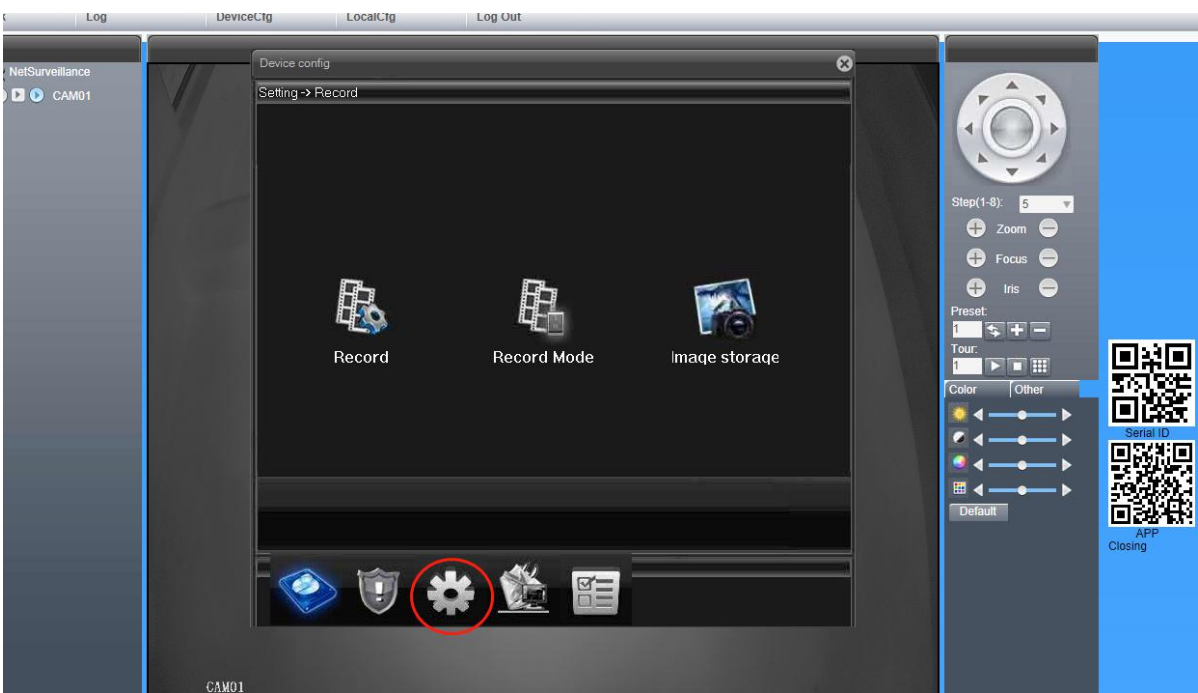


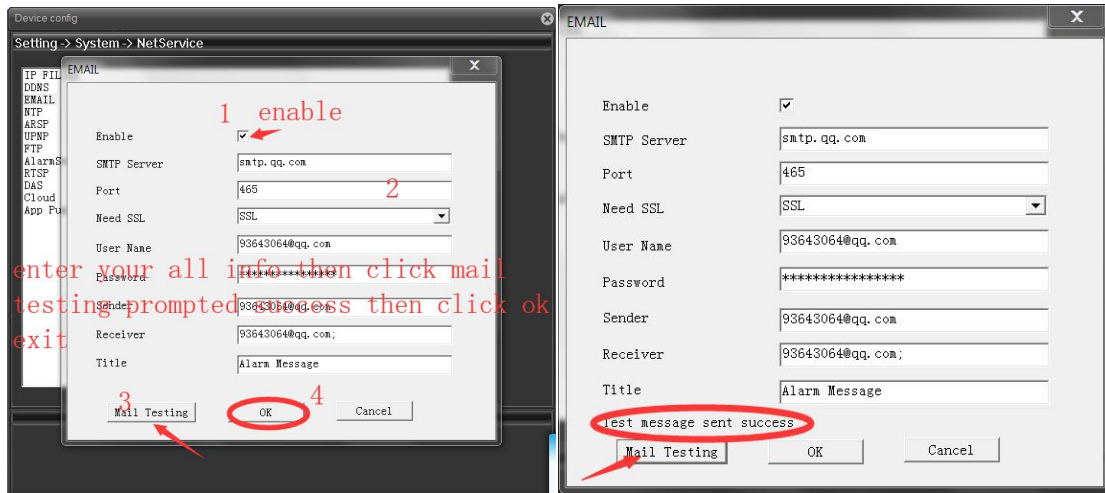


Select language and click “next” “next” “next” button and finished installation. Then refresh the IE will show “login” button. If still have not see login button suggest your restart computer .

3. Login by IE enter user name: admin and default password is null (if you modify the password please enter correct password), click login enter camera preview page.







Click OK to exit return to previous menu click OK for save setting and exit then close camera settings.

